



bode™



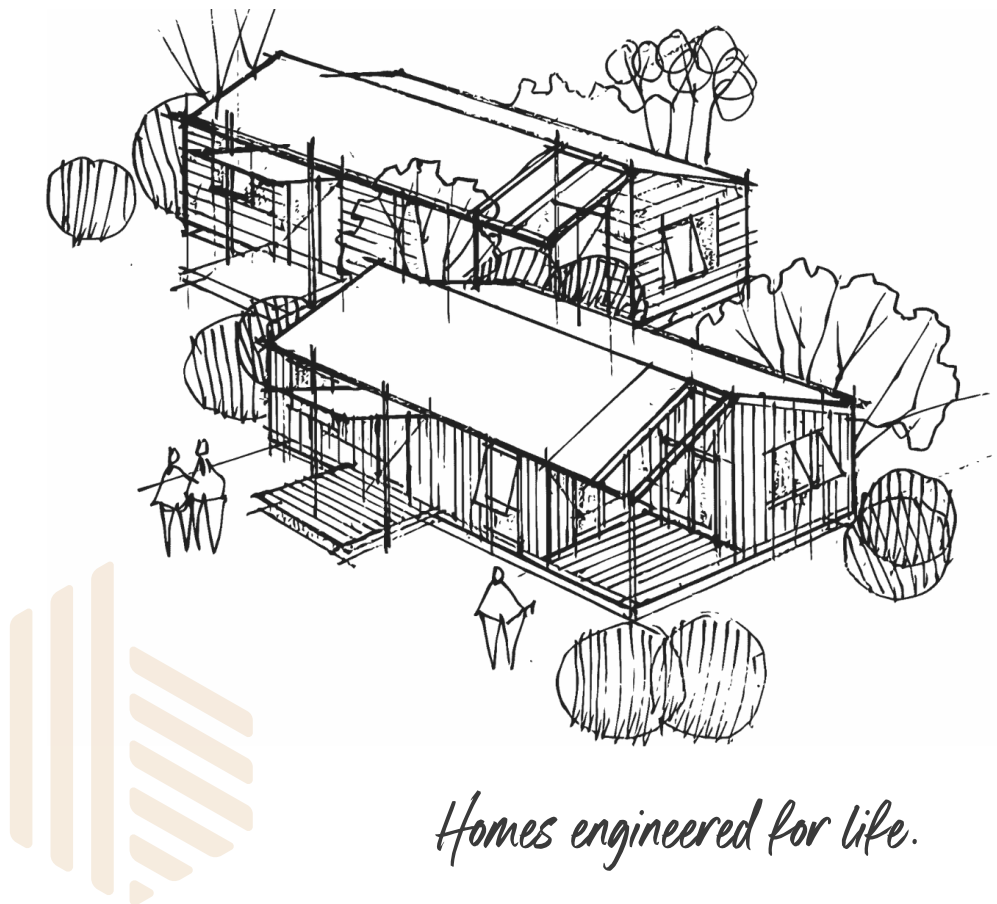
THE
WELLINGTON
COMPANY

ABOUT BODE HOMES

Bode is part of The Wellington Company group, which is a major player in the redevelopment of Wellington's urban environments and historic places. The Wellington Company has been at the forefront of environmental design and innovation and is responsible for delivering Wellington's first five-star green buildings, Spark Central and Conservation House, both of which utilise cutting-edge technology to deliver superior-performing and sustainable building solutions to the market.

With decades in the making, the team at Bode are ready to shake up the housing industry. We're giving New Zealanders a cost-effective place to call home through innovation and a genuine duty of care mindset. Our solution is efficient, impactful, light on the planet, and supportive of our local industry. There's much talk in the housing industry about affordable housing, modular design, sustainable building, offsite construction, speed-to-build, waste minimisation, and energy efficiency.

We believe Bode is all that, and more.



Homes engineered for life.

THE BODE DIFFERENCE

PERFORMANCE

Experience the ultimate in high-performance homes with Bode. Our PIR (polyisocyanurate) panel homes are designed and built for optimal structural performance that exceed rigorous building code requirements for wind zones in New Zealand. With impact resistance, hydrophobic design, and future-proofed insulation, our homes provide unbeatable performance.



MANUFACTURING

At Bode, we pride ourselves on our precision manufacturing processes. We have made a significant investment in research and development, as well as robotic technologies that enable us to produce our homes quickly, at scale, with low waste and highly repeatable outcomes. We are confident that the homes we supply will not only meet our expected level of performance but will also be delivered efficiently.



QUALITY

Enjoy a home that is warm, dry, and healthy with Bode. Our homes offer a thermal envelope that includes high R-value walls, floors, roofs, and thermally broken joinery. Our energy-efficient design significantly reduces operating and energy costs for homeowners. This is thanks to the superior insulation performance of our PIR panels and the heat recovery ventilation unit that controls temperature and humidity.



AFFORDABILITY

At Bode, we believe that everyone deserves a high-quality, affordable home. Our homes are cost-effective to purchase and maintain in the long run, making Bode the perfect choice for homeowners who want the best value.



BODE 32

↑↓ 32m² 🪑 1 🛏 1 🌞 1



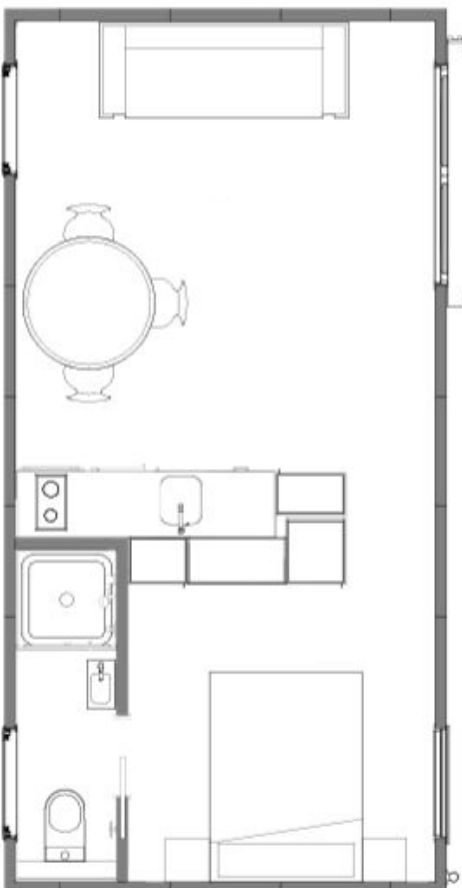
Welcome to the Bode 32 - the perfect entry into smaller home living!

Our Bode 32 is not just a home; it's a cozy and comfortable space that you can customise to suit your needs. Start with an empty shell and let your creativity flow or have us fit it out for you.

The Bode 32 has been built and designed using advanced PIR structural insulation panels. This provides you with a warm, healthy, and energy-efficient living

space that is both low-waste and affordable.

Whether you're an individual or a couple looking for a new home, this is the perfect living space for you. With its compact yet functional design, the Bode 32 has everything you need to live comfortably, efficiently, and stylishly.



KEY FEATURES

Lighting - Bode light-rail system

100mm PIR Panel Walls - R-5.0 insulation

150mm PIR Panel Roof and Floor - R-7.0 insulation

External dimensions - 8.0m x 4.0m

Internal dimensions - 7.8m x 3.8m

Roof pitch - 5 degrees

Joinery: Double glazed, argon filled, thermally broken frame and Low-E coating

Exterior - COLORSTEEL Maxx cladding and roofing

Surefoot foundation system

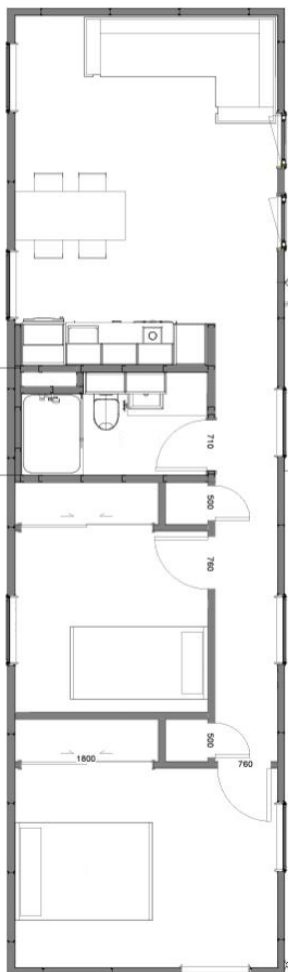
Suitable for extra high wind zone

Internal walls : COLORSTEEL Maxx Titania

Internal top brackets: Colour matched Titania

BODE 56

↑↓ 56m² 🪑 1 🛏 2 🌞 1



Looking for an affordable and energy-efficient home that doesn't compromise on quality? Look no further than the Bode 56!

This two-bedroom home comes fully completed with a bathroom and kitchen and offers two layout options to suit your needs.

With its construction using PIR structural insulation panels, this home offers a warm, healthy, thermally efficient, and low-waste living space.

Whether you're an individual or a family, it also offers the perfect living space that's both comfortable and affordable.

So why wait? Choose the Bode 56 and experience the ultimate in modern, sustainable living today

KEY FEATURES

Lighting - Bode light-rail system

100mm PIR Panel Walls - R-5.0 insulation

150mm PIR Panel Roof and Floor - R-7.0 insulation

External dimensions - 14m x 4.0m

Internal dimensions - 13.8 x 3.8m

Roof pitch - 15 degrees

Joinery: Double glazed, argon filled, thermally broken frame and Low-E coating

Exterior - COLORSTEEL Maxx cladding and roofing

Surefoot Foundation System

Internal walls : COLORSTEEL Maxx Titania

Internal top brackets : Exposed, colour matched Titania

BODE 96

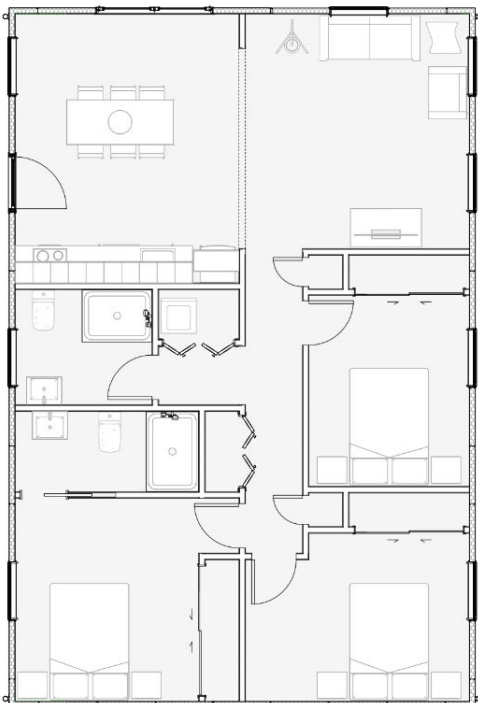
↑↓ 96m² 1 3 2



This three-bedroom home is thoughtfully designed with a fully equipped bathroom and kitchen, providing a seamless living experience. With two layout options available, you can customise the space to perfectly suit your needs.

This home ensures a cosy, healthy, and highly energy-efficient living environment. Embracing sustainability, this home minimises waste and maximises thermal efficiency, keeping your utility bills in check.

Ideal for individuals or families seeking comfort without breaking the bank, the Bode 96 offers the perfect balance of affordability and functionality.



KEY FEATURES

Lighting - Bode light-rail system

100mm PIR Panel Walls - R-5.0 insulation

150mm PIR Panel Roof and Floor - R-7.0 insulation

External dimensions - 12m x 8.0m

Internal dimensions - 11.8 x 7.8m

Gable roof

Joinery: Double glazed, argon filled, thermally broken frame and Low-E coating

Exterior - COLORSTEEL Maxx cladding and roofing

Surefoot Foundation System

Internal walls : COLORSTEEL Maxx Titania

Internal top brackets : Exposed, colour matched Titania

BODE 128

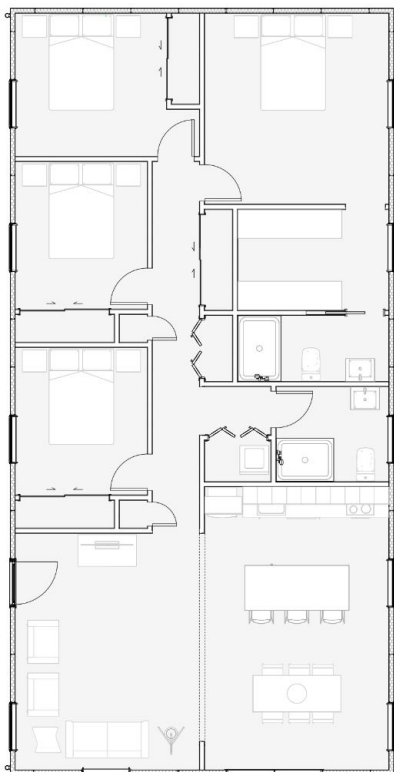
↑ ↓ 128m² 2 4 2



This home comes fully completed with four bedrooms, offering ample space for you and your family to thrive. The thoughtful layout ensures maximum functionality, providing you with the flexibility to personalize your living spaces to suit your unique preferences.

Whether you're a growing family or an individual looking for a spacious and affordable home, the Bode 128 caters to all your needs. Embrace

the advantages of modern living in a home that seamlessly combines comfort, energy efficiency, and affordability.



KEY FEATURES

Lighting - Bode light-rail system

100mm PIR Panel Walls - R-5.0 insulation

150mm PIR Panel Roof and Floor - R-7.0 insulation

External dimensions - 16m x 3.8m

Internal dimensions - 15.8 x 7.8m

Gable roofed

Joinery: Double glazed, argon filled, thermally broken frame and Low-E coating

Exterior - COLORSTEEL Maxx cladding and roofing

Surefoot Foundation System

Internal walls : COLORSTEEL Maxx Titania

Internal top brackets : Exposed, colour matched Titania



COLOUR AND ACCESSORY OPTIONS

Make your Bode Home truly yours with our wide range of colour and accessory options. Personalise your space to reflect your unique style and preferences, and create a home that is tailored to your taste.



ROOF; GULL GREY / **WALLS;** Karaka / **WINDOWS;** SILVER ANODISED / **VERANDAH FRAMES;** GULL GREY



ROOF; GULL GREY / **WALLS;** RIVERGUM / **WINDOWS;** SILVER ANODISED / **VERANDAH FRAMES;** GULL GREY



ROOF; IRONSAND / **WALLS;** BONEWHITE / **WINDOWS;** IRONSAND MATT / **VERANDAH FRAMES;** IRONSAND



ROOF; IRONSAND / **WALLS;** PIONEER RED / **WINDOWS;** SILVER ANODISED / **VERANDAH, FRAMES;** IRONSAND



ROOF; GULL GREY / **WALLS;** THUNDER GREY, / **WINDOWS;** SILVER ANODISED / **VERANDAH FRAMES;** GULL GREY



ACCESSORY; RAIN SCREEN



ACCESSORY; DECK AND STAIRS



ACCESSORY; PERGOLA

GET IN TOUCH WITH US

There's no place like Bode.
Join the journey.



Email

sales@bode.co.nz

Website

www.bode.co.nz



@bode_nz



@Bodenz



@Bodenz